

SUGGESTIONS FOR 18 MELODIC STUDIES

STUDIES DO NOT NEED TO BE DONE SEQUENTIALLY

If a study exceeds your range, transpose octaves or edit the study making sure to resolve to a chord tone of the tonic chord.

1. #1 & 2. – Apply to all 7 note scales / any root / all intervals
2. #3 & 4. – Apply to all scales / any root
3. #5 & 6 – Apply to all scales / include secondary dominants
4. #7 & 8. – Apply to any root
5. #9 & 10. – Apply to all scales / include secondary dominants
6. #11. – Apply to all scales / include secondary dominants
7. #12-18. – Apply to any root
8. Apply varied rhythms and articulations to all.

18 Melodic Studies in Major Key

ssmith 07

1)



2)



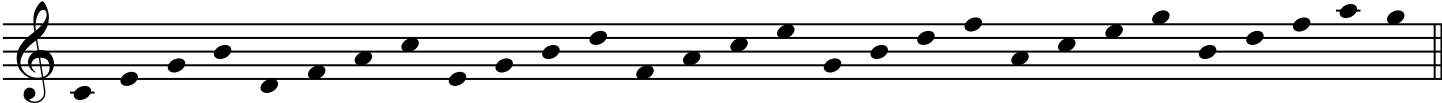
3)



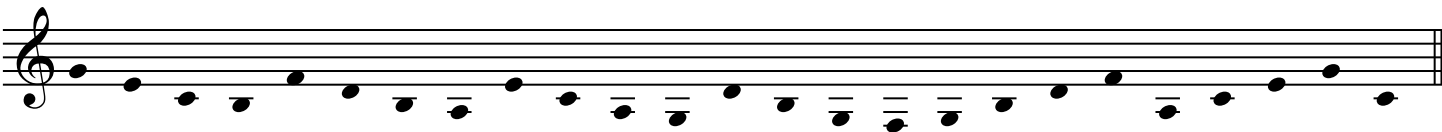
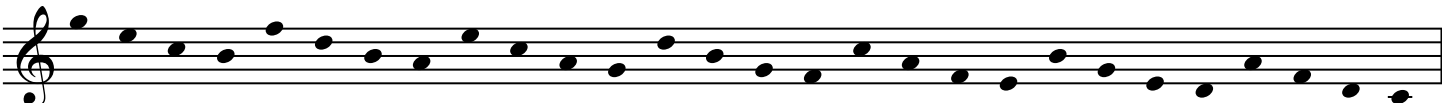
4)



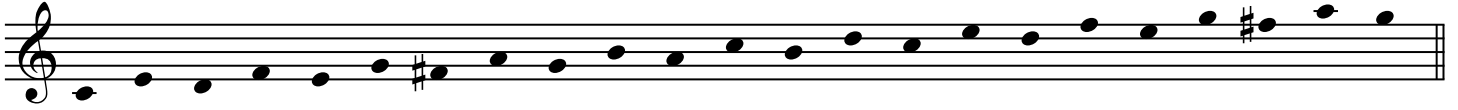
5)



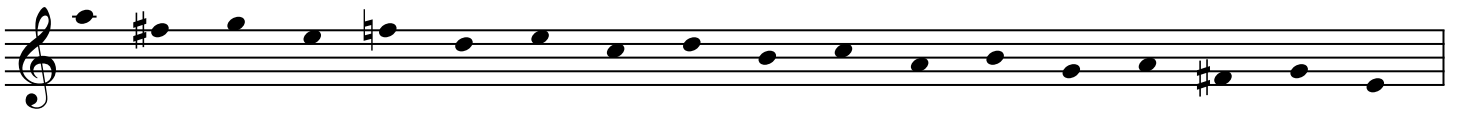
6)



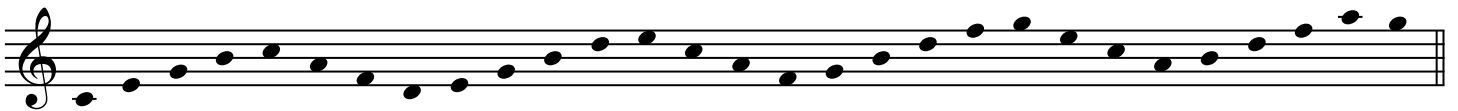
7)



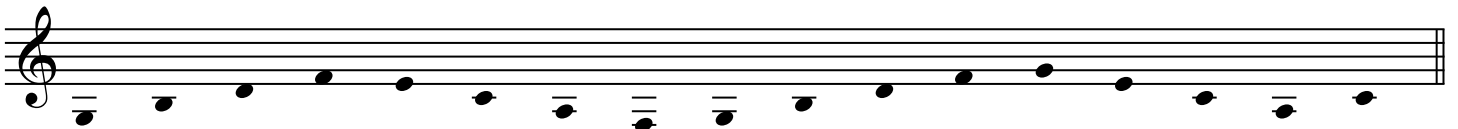
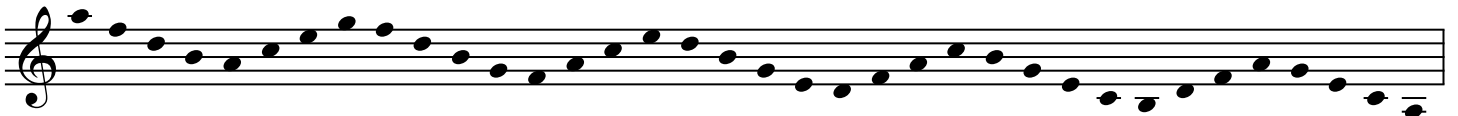
8)



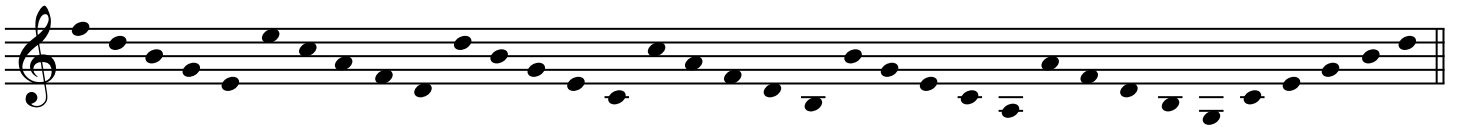
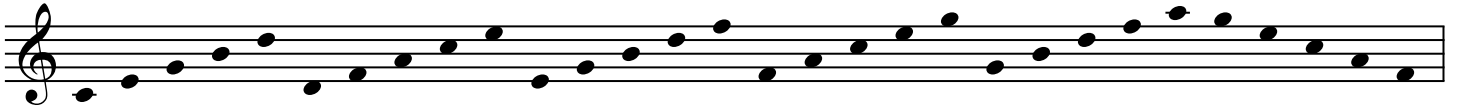
9)



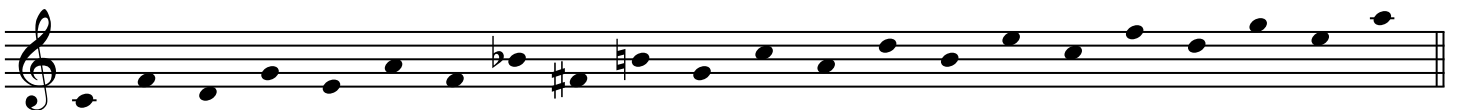
10)



11)

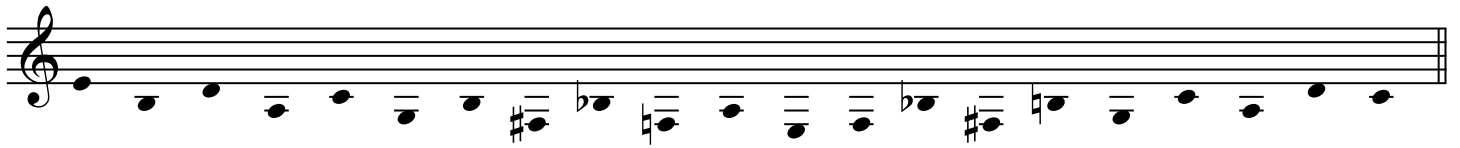
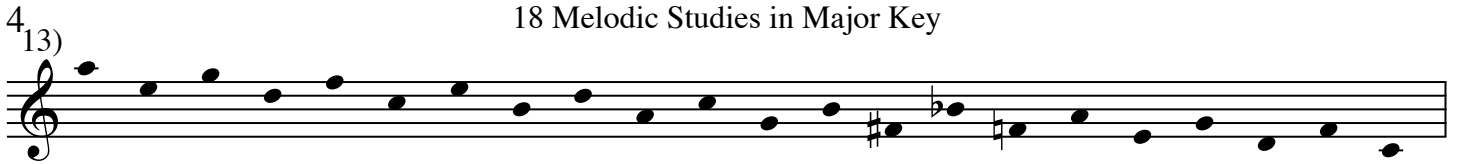


12)

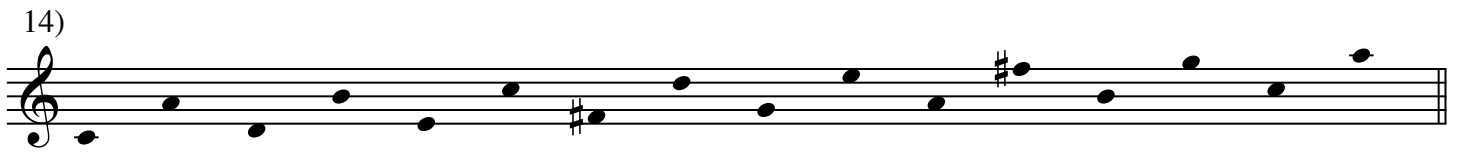


18 Melodic Studies in Major Key

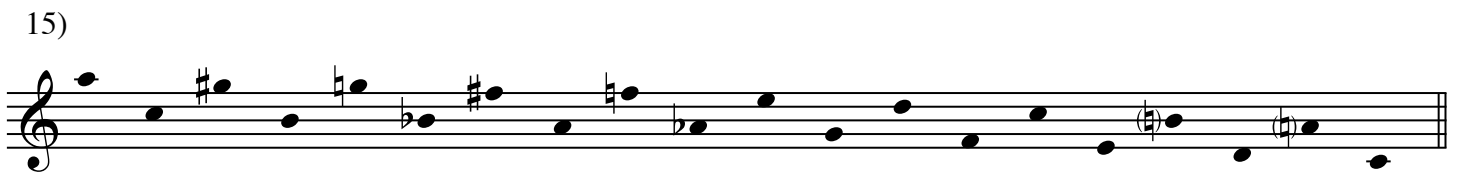
4
13)



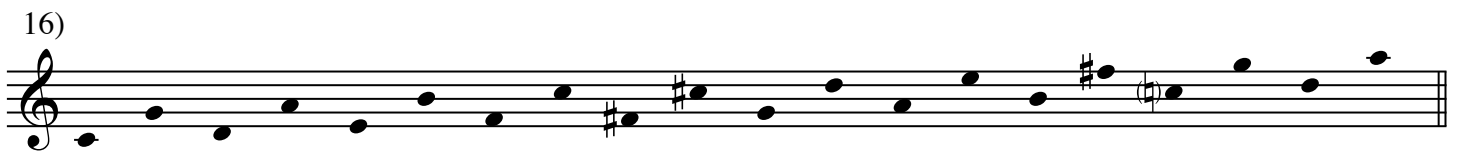
14)



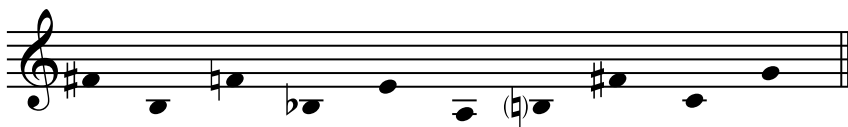
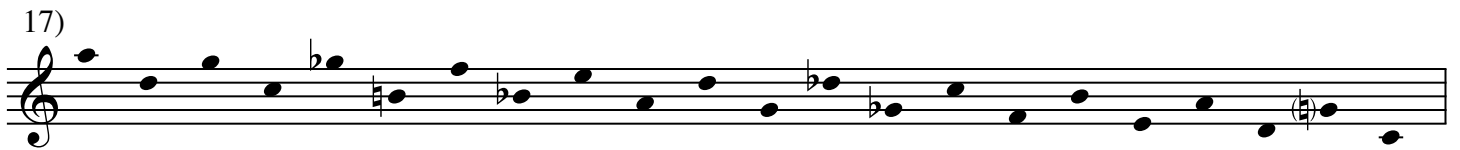
15)



16)



17)



18)

